

AB5756C

Audio Player Microcontroller

Versions: 0.0.1
2024.9.29



Declaration

Copyright © 2024, www.bluetrum.com.

All Rights Reserved. No Unauthorized Distribution.

Bluetrum reserves the right to make changes without further notice to any products herein to improve reliability, function or design.

For further information on the technology, product and business term, please contact Bluetrum Company.

For sales or technical support, please send email to the address:

Sales: sales@bluetrum.com

Technical: project@bluetrum.com

Revision History

Date	Version	Comments	Revised by
2024-09-29	0.0.1	First draft	Leo

Table of Contents

TABLE OF CONTENTS	2
1 GENERAL DESCRIPTION	3
2 PRODUCT FEATURES	4
3 PACKAGE DEFINITION	6
3.1 PIN ASSIGNMENT	6
3.2 PIN DESCRIPTION	6
4 CHARACTERISTICS.....	9
4.1 ABSOLUTE MAXIMUM RATINGS	9
4.2 PMU PARAMETERS	9
4.3 IO PARAMETERS	10
4.4 AUDIO DAC PARAMETERS	11
4.5 AUDIO ADC PARAMETERS	13
4.6 BT PARAMETERS.....	14
4.7 CURRENT PARAMETERS.....	14
5 PACKAGE INFORMATION.....	15

1 General Description

This datasheet provides a comprehensive overview of the AB575X Bluetooth audio system-on-a-chip (SoC). The AB575X is designed to deliver high-quality audio experiences for a wide range of wireless audio applications, including headsets, earbuds, and speakers. AB5756C is a highly integrated solution that combines a 32-bit RISC-V processor core with DSP instruction, high-performance audio processor, Bluetooth radio, power management unit, and various peripherals, offering a compelling balance of performance, power efficiency, and flexibility.

SoC Architecture

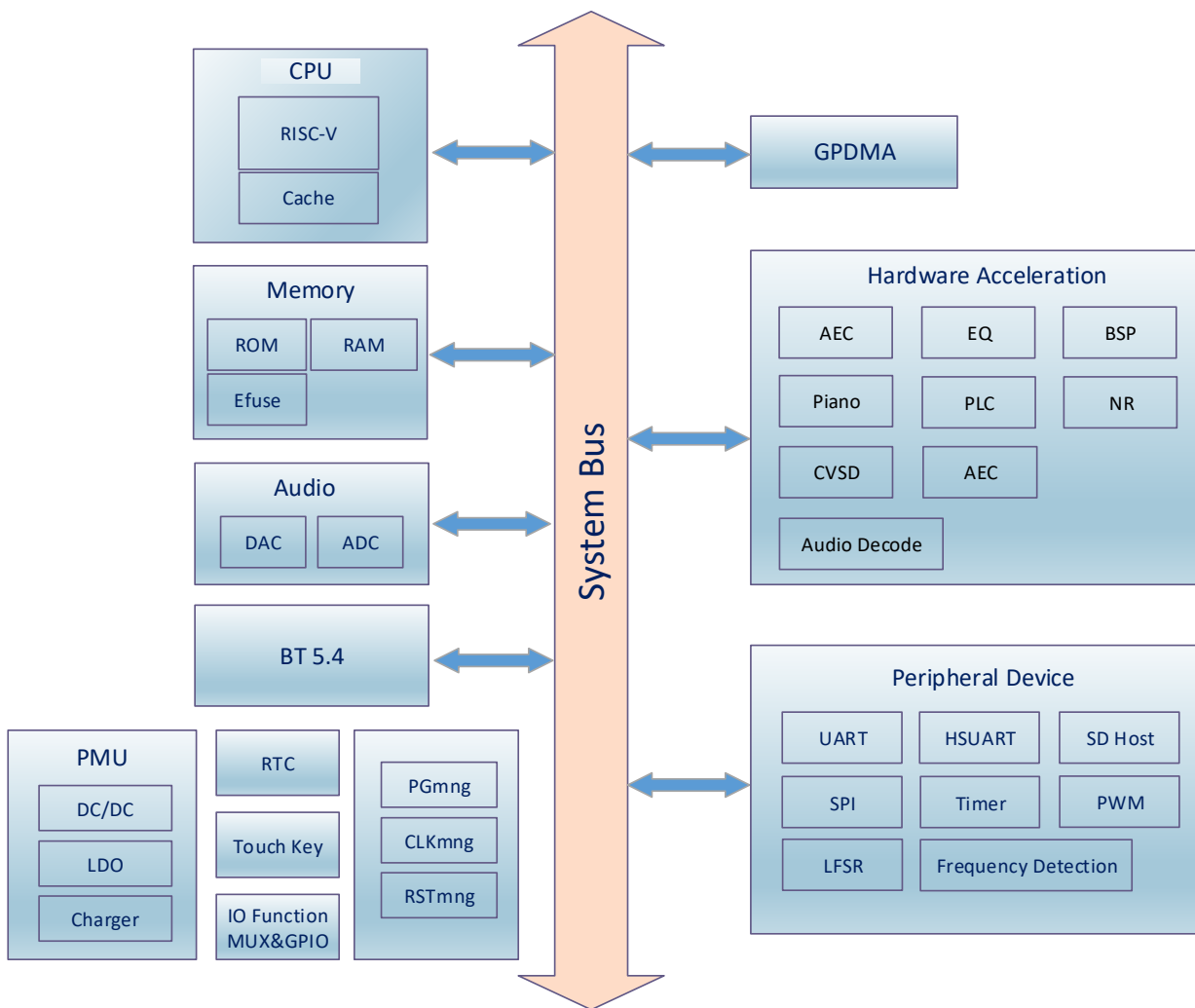


Figure 1-1 AB5756C Block Diagram

2 Product Features

CPU and Flexible IO

- High performance 32bit RISC-V processor Core with DSP instruction
- RISC-V typical speed: 120MHz
- Program memory: internal 1M bit flash
- Flexible GPIO pins with Programmable pull-up and pull-down resistors;
- Support GPIO wakeup or interrupt;

Bluetooth Radio

- Compliant to Bluetooth 5.4 (QDID: 215269) ;
- TX maximum output power +10dBm;
- RX Sensitivity with -91 @ Basic Rate;
- RX Sensitivity with -94 @ EDR;

Audio Interface

- Audio codec with 16bit mono DAC and 16bit mono ADC;
- Support flexible audio EQ adjust;
- Support Sample rate 8, 11.025, 12, 16, 22.05, 32, 44.1 and 48KHz;
- Mono MIC amplifier input;
- High performance mono audio ADC with 95dB SNR @Single-end mode;
- High performance mono audio DAC with 107dB SNR, support single-ended , differential and VCMBUF mode;

Peripheral and Interfaces

- Support Low power Touch Key;
- SD Card Host controller x1;
- Master/Slave SPI x1;
- Watch Dog;
- 10-bit SAR ADC x6;
- Frequency detector;
- Normal UART x3; High Speed UART with CTS/RTS x1;
- 16-bit Basic Timer x2;
- 32-bit Basic Timer x3, 32-bit multi-function timers that supports capture mode and PWM mode x1;
- Built in PMU; buck DCDC converter; capless LDOs; LDO; Li-battery charger;

Application

- OWS Earbud;
- TWS Earphone;
- Headset;
- Bluetooth Speaker;

Key Parameters

Part Num: AB5756C

Parameter	Value
Max. TX Power	+10 dBm
RX Sensitivity	-91dBm@Basic Rate -94dBm@EDR
TX Current @0dBm,3V, LDO mode	TBC
RX Current @-94dBm,3V, LDO mode	TBC
Sleep Current with retention	TBC
Deep Sleep Mode Current	TBC
Sniff Mode Current	TBC
Flash	1Mbit
Supply Voltage	3.0~4.5V
GPIO	5
Operating Temperature	-40~+85°C
Storage Temperature	-65°C ~ +150°C
Package Size	QFN20 3*3
PMU	LDO/Buck mode + Charger

3 Package Definition

3.1 Pin Assignment

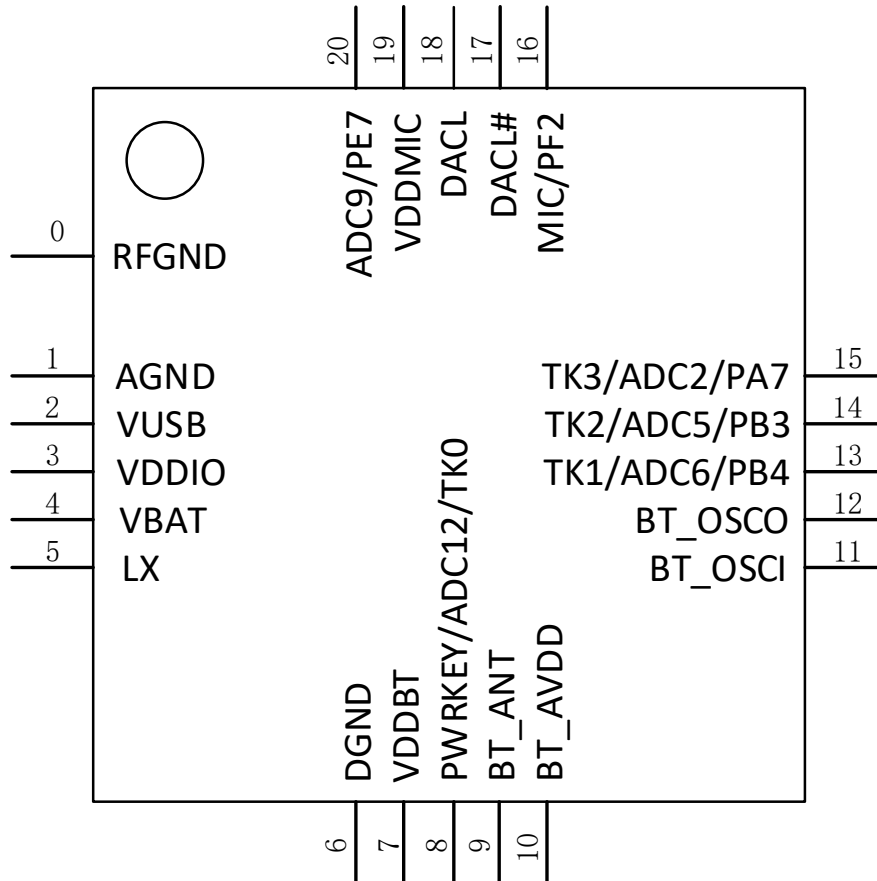


Figure 3-1 Pin assignment

3.2 Pin Description

Table 3-1 QFN20 pin description

Pin No.	Name	Type	Drive (mA)	Function
0	RFGND	GND	/	BT RF Ground
1	AGND	GND	/	DAC Ground
2	VUSB	PWR	/	VUSB power input TX0-G5(RX)/RX0-G5 TX1-G2(RX)/RX1-G2 HSTRX-G10
3	VDDIO	PWR	/	VDDIO Power Output

4	VBAT	PWR	/	VBAT Power Input
5	LX	PWR	/	Buck inductor connect pin
6	DGND	GND	/	Digital Ground
7	VDDBT	PWR	/	BT Power
8	PWRKEY	I/O	/	Power key input ADC12 TK0
9	BT_ANT	A	/	BT ANT
10	BT_AVDD	PWR	/	BT Power
11	BT_OSCI	A	/	26M OSC input
12	BT_OSCO	A	/	26M OSC output
13	PB4	I/O	8/32	Touch key CH1 ADC6 SDCMD-G2 UART0_RX0-G3 HSTRX-G8 FMOSC-G4 TMR3CAP_G4 PWM0-T3 PB4
14	PB3	I/O	8/32	Touch key CH2 ADC5 SDDAT0-G1/G2 UART0_TX0-G3(RX) HSTRX-G3 FMOSC-G3 PWM2-T3 TMR3CAP_G2 PB3
15	PA7	I/O	8/32	Touch key CH3 ADC2 SDCLK-G1/G2 UART0_TX0-G1 UART1_TX1-G1(RX) HSTRX-G1 FMOSC-G1 PWM1-T3 TMR3CAP_G1 PA7
16	PF2/MIC	I/O	8/32	ADC10 UART0_TX0-G7(RX) UART2_TX2-G1(RX) HSTRX-G5 UDET_TX2-G1(RX) FMOSC-G7 PF2
17	DACL#	A	/	DAC differential L#
18	DACL	A	/	DAC L
19	VDDMIC	PWR	/	MIC Power
20	PE7/ADC9	I/O	8/32	ADC9

				UART0_TX0-G4 UART2_RX2-G1 HSTRX-G4 UDET_RX2-G1 FMOSC-G6 TMR3CAP_G6 PE7
--	--	--	--	--

Note: I/O: Digital input/output; I : Digital input; A : Analog Pin; PWR: Power Pin; GND: Ground.

4 Characteristics

4.1 Absolute Maximum Ratings

Table 4-1 Absolute Maximum Ratings

Sym	Characteristics	Min	Typ	Max	Unit	Conditions
Tamb	Ambient Temperature	-40		+80	°C	
IIN	Input Current	-32		+32	mA	
VIN	Input Voltage	-0.3		VDDIO+0.3	V	VDDIO=3.3V

4.2 PMU Parameters

Table 4-2 PMU voltage input Parameters

Sym	Characteristics	Min	Typ	Max	Unit	Conditions
VUSB	Charger Voltage input	4.6	5.0	5.5	V	
VBAT	Voltage input	3.0	3.7	4.5	V	
V _{IL}	CMOS Low Level Input Voltage	0		0.3*VDDIO	V	VDDIO=3.3V
V _{IH}	CMOS Low Level Input Voltage	0.7*VDDIO		VDDIO	V	
V _{TH}	CMOS Threshold Voltage		0.5*VDDIO		V	

Table 4-3 VDDIO LDO Parameters

Sym	Characteristics	Min	Typ	Max	Unit	Conditions
VDDIO	3.3V LDO voltage output	2.4	3.3	3.8	V	Load current < 10mA
ΔVDDIO	Output Mismatch 1-sigma	-	12	-	mV	VDDIO=3.3v
ILOAD	Maximum output current	-	-	150	mA	@VBAT=3.6v
ISC	Short Circuit Current Limit	-	-	525	mA	@VBAT=3.8v

Table 4-4 VDDBT LDO Parameters

Sym	Characteristics	Min	Typ	Max	Unit	Conditions
VDDBT	1.6V LDO voltage output	0.85	1.25	1.6	V	Load current < 5mA
ΔVDDBT	Output Mismatch 1-sigma	-	12	-	mV	VDDBT=1.6v
ILOAD	Maximum output current	-	-	370	mA	@VBAT=3.0v
ISC	Short Circuit Current Limit	-	-	580	mA	@VBAT=3.8v

Table 4-5 VDDCORE LDO Parameters

Sym	Characteristics	Min	Typ	Max	Unit	Conditions
VDDCORE	1.2V LDO voltage output	0.7	1.1	1.35	V	Load current < 3mA
Δ VDDCORE	Output Mismatch 1-sigma	-	5.7	-	mV	VDDCORE=1.1v
ILOAD	Maximum output current	-	-	230	mA	@VBAT=3.6v
ISC	Short Circuit Current Limit	-	-	700	mA	@VBAT=3.8v

Table 4-6 VDDBT BUCK Parameters

Sym	Characteristics	Min	Typ	Max	Unit	Conditions
VDDBT	1.2V LDO voltage output	0.85	1.25	1.6	V	Load current < 5mA
Δ VDDBT	Output Mismatch 1-sigma	-	6	-	mV	VDDBT=1.25v
ILOAD	Maximum output current	-	-	366	mA	@VBAT=3.6v
ISC	Short Circuit Current Limit	-	-	366	mA	@VBAT=3.8v

Table 4-7 Battery Charge

Sym	Characteristics	Min	Typ	Max	Unit	Conditions
VUSB	Charger input voltage	4.6	5	5.5	V	
VBAT _{float}	Charge Voltage	4.15	4.2	4.25	V	VUSB>4.6V
			4.35		V	VUSB>4.75V
			4.4		V	VUSB>4.8V
			4.45		V	VUSB>4.85V
I _{CH}	Charge current	5		320	mA	VBAT<=VBAT _{float} -150mV, VUSB>=VBAT _{float} +550mV
I _{End}	End of charge current	2.5		37.5	mA	
V _{Trickle}	Trickle charge Voltage	2.9	3	3.1	V	VUSB>4.6V

4.3 IO Parameters

Table 4-8 I/O Parameters

IOTYPE1—Electrical Characteristics							
Symbol	Description	Related GPIO	Min	Typical	Max	Units	Conditions
VIL	Low-level input voltage		-0.3		0.93	V	VDDIO=3.3V
VIH	High-level input voltage		2.31		3.6	V	VDDIO=3.3V
Driver Ability 1	Output Driver Ability 1			32		mA	VDDIO=3.3V
Driver Ability 0	Output Driver Ability 0			8		mA	VDDIO=3.3V

IOTYPE1—Electrical Characteristics							
RPUP0	Internal pull-up resistor 0		8	10	12	KΩ	
RPUP1	Internal pull-up resistor 1		0.24	0.3	0.36	KΩ	
RPUP2	Internal pull-up resistor 2		160	200	240	KΩ	
RPDN0	Internal pull-down resistor 0		8	10	12	KΩ	
RPDN1	Internal pull-down resistor 1		0.24	0.3	0.36	KΩ	
RPDN2	Internal pull-down resistor 2		160	200	240	KΩ	

IOTYPE4—Electrical Characteristics							
Symbol	Description	Related GPIO	Min	Typical	Max	Units	Conditions
VIL	Low-level input voltage		-0.3		0.93	V	VDDIO=3.3V
VIH	High-level input voltage		2.31		5.5	V	VDDIO=3.3V
Driver Ability	Output Driver Ability			8		mA	VDDIO=3.3V
RPUP	Internal pull-up resistor		8	10	12	KΩ	
RPDN	Internal pull-down resistor		8	10	12	KΩ	

Table 4-9 Internal Resistor Characteristics

Port	General Output	High Drive	Internal Pull-Up Resistor	Internal Pull-Down Resistor	Comment
PA6-PA7 PB3-PB4 PE7 PF2 PG1/2/4/5	8mA	32mA	0.3K/10K/200K	0.3K/10K/200K	Internal pull-up/pull-down resistance accuracy +/-20%
PE0 (High Voltage IO)	8mA	-	10K	10K	

4.4 Audio DAC Parameters

Table 4-10 Differential Mode

Parameter	Conditions	Min	Typ	Max	Unit
Resolution				16	Bits
Fsample		8	/	48	KHz
SNR	Sin -1Khz ;BW=20-20KHz; A-Weighted Output Level : 1.25 Vrms	/	107	/	dB

Parameter	Conditions	Min	Typ	Max	Unit
	Fsample 48KHz , 32R;				
THD+N	Sin -1Khz ;BW=20-20KHz; A-Weighted Output Level : 1.25 Vrms Fsample 48KHz , 32R;	/	-78	/	dB
Noise Floor	Audio PA on A-WT without DRE		4.786		uVrms
DNR	Sin -1Khz ;BW=20-20KHz; A-Weighted Fsample 48KHz , 32R;		100.4		

Table 4-11 Single-ended Mode

Parameter	Conditions	Min	Typ	Max	Unit
Resolution				16	Bits
Fsample		8	/	48	KHz
SNR	Sin -1Khz ;BW=20-20KHz; A-Weighted Output Level : 560m Vrms Fsample 48KHz , 32R;	/	94.5	/	dB
THD+N	Sin -1Khz ;BW=20-20KHz; A-Weighted Output Level : 560m Vrms Fsample 48KHz , 32R;	/	-77.2	/	dB
Noise Floor	Audio PA on A-WT without DRE		10.59		uVrms
DNR	Sin -1Khz ;BW=20-20KHz; A-Weighted Fsample 48KHz , 32R;		94.3		

Table 4-12 VCMBUF Mode

Parameter	Conditions	Min	Typ	Max	Unit
Resolution				16	Bits

Parameter	Conditions	Min	Typ	Max	Unit
Fsample		8	/	48	KHz
SNR	Sin -1KHz ;BW=20-20KHz; A-Weighted Output Level : 561.5m Vrms Fsample 48KHz , 32R;	/	102.1	/	dB
THD+N	Sin -1KHz ;BW=20-20KHz; A-Weighted Output Level : 561.5m Vrms Fsample 48KHz , 32R;	/	-82.6	/	dB
Noise Floor	Audio PA on A-WT without DRE		4.365		uVrms
DNR	Sin -1KHz ;BW=20-20KHz; A-Weighted Fsample 48KHz , 32R;		98.3		

4.5 Audio ADC Parameters

Table 4-13 Audio ADC Parameters

Mode	Sym	Characteristics	Min	Typ	Max	Unit	Conditions
Diff Mode	SNR		-	95	-	dB	VCM cap=NC VDDMIC cap=1uF with A-wt filter Input 1dBV @ Fin=1KHz
	THD+N		-	-94	-	dB	
	Input Range	Maximum input voltage	-	2	-	dBV	
External-RC Single Mode	PGA Gain		0		12	dB	0dB / 6dB /12dB
	SNR		-	91	-	dB	VCM cap=NC VDDMIC cap=1uF with A-wt filter Input -2dBV @ Fin=1KHz PGA Gain=0dB
	THD+N		-	-70	-	dB	
	Input Range	Maximum input voltage	-	-2	-	dBV	
Internal-RC Single Mode	PGA Gain		0		12	dB	0dB / 6dB /12dB
	SNR		-	89	-	dB	VCM cap=NC VDDMIC cap=1uF with A-wt filter Input -2dBV @ Fin=1KHz PGA Gain=0dB
	THD+N		-	-68	-	dB	
	Input Range	Maximum input voltage	-	-2	-	dBV	

4.6 BT Parameters

Table 4-14 BT Parameters

Characteristics	Min	Typical	Max	Unit	Conditions
Maximum Transmit Power	-	9.5	10	dBm	GFSK TX power
RMS DEVM	-	6	-	%	Typical TX power 2-DH5 packet
Peak DEVM	-	15	-	%	
EDR Relative Transmit Power	-	-1.8	-	dB	
Sensitivity @ Basic Rate	-	-91	-	dBm	BER=0.1%, using DH5 packet
Sensitivity @ EDR	-	-94	-	dBm	BER=0.01%, using 2-DH5 packet

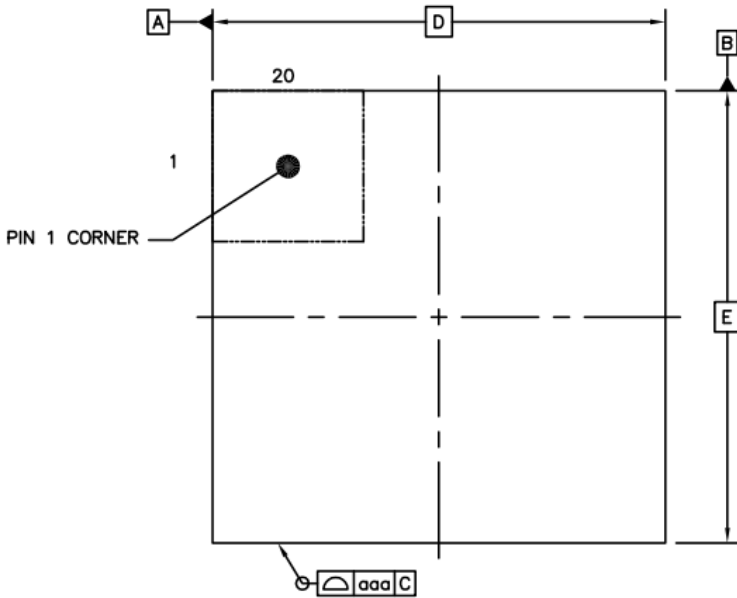
4.7 Current Parameters

Table 4-15 Current Parameters

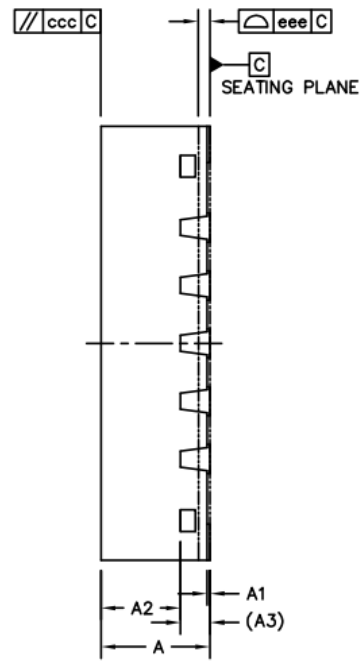
Mode	Characteristics	Min	Typ	Max	Unit	Conditions
With DC DC Buck Mode	TX RF Current @Pout = 0dBm		TBC		mA	V _{BAT} =3.3V
	RX RF Current @Sensitivity level		TBC		mA	
	Supply Current @Sleep with RAM retention		TBC		uA	
	Supply Current @Deep sleep		TBC		uA	
	Supply Current @Power Off		TBC		uA	
	Supply Current @Sniff		TBC		uA	500ms interval
	Supply Current @Broadcast		TBC		uA	500ms interval
W/O DC DC LDO Mode	TX RF Current @Pout = 0dBm		TBC		mA	V _{BAT} =3.3V
	RX RF Current @Sensitivity level		TBC		mA	
	Supply Current @ Sleep with RAM retention		TBC		uA	
	Supply Current @Deep sleep		TBC		uA	
	Supply Current @Power Off		TBC		uA	
	Supply Current @Sniff		TBC		uA	500ms interval
	Supply Current @ Broadcast		TBC		uA	500ms interval

5 Package Information

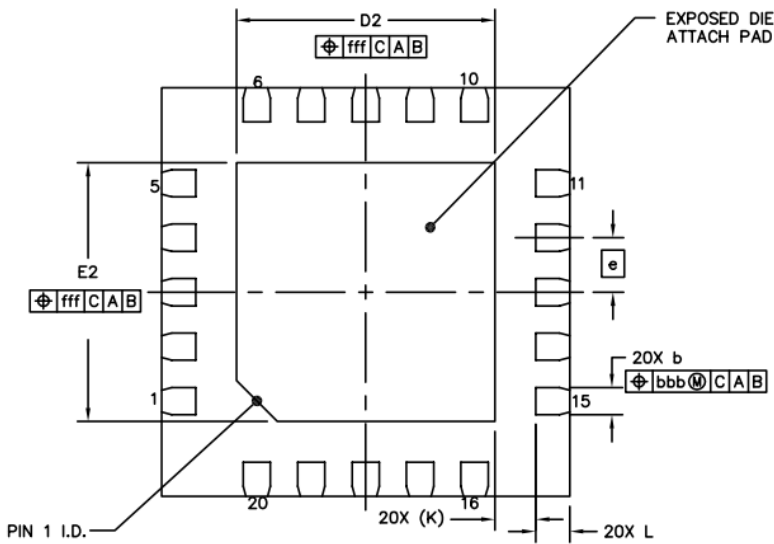
QFN3X3-20L(P0.4T0.75)



TOP VIEW



SIDE VIEW



BOTTOM VIEW

		SYMBOL	MIN	NOM	MAX
TOTAL THICKNESS		A	0.7	0.75	0.8
STAND OFF		A1	0	0.02	0.05
MOLD THICKNESS		A2	---	0.55	---
L/F THICKNESS		A3	0.203 REF		
LEAD WIDTH		b	0.15	0.2	0.25
BODY SIZE	X	D	3 BSC		
	Y	E	3 BSC		
LEAD PITCH		e	0.4 BSC		
EP SIZE	X	D2	1.8	1.9	2
	Y	E2	1.8	1.9	2
LEAD LENGTH		L	0.15	0.25	0.35
LEAD TIP TO EXPOSED PAD EDGE		K	0.3 REF		
PACKAGE EDGE TOLERANCE		aaa	0.1		
MOLD FLATNESS		ccc	0.1		
COPLANARITY		eee	0.08		
LEAD OFFSET		bbb	0.07		
EXPOSED PAD OFFSET		fff	0.1		



Contact us

Address : 1301-1 Building A, Zihui Square, No.4068 Qiaoxiang Road,
GaofaCommunity, Shahe Street, Nanshan District, Shenzhen, P.R.China

E-mail: info@bluetrum.com

Website: www.bluetrum.com